

# Challenger<sup>®</sup>

PACKAGING

Quality • Consistency • Dependability

## Tools, Dispensers & Accessories



# TABLE OF CONTENTS

<i>PRODUCT CATEGORY</i>	<i>PAGE</i>
STEEL TENSIONERS	1
STEEL SEALERS & CUTTERS	2
POLY & CORD TENSIONERS	3
POLY SEALERS	4
SEALS & BUCKLES	5
STRAPPING DISPENSERS	6
CORD DISPENSERS	6
EDGE PROTECTORS & CUTTER	7
STORAGE SOLUTIONS	8
PACKAGING DISPENSERS	8
MATERIAL DISPENSERS	10
POLY TUBING & BAG DISPENSERS	12
STRETCH FILM DISPENSERS	13



# STEEL TENSIONERS



## CP-1400

*Compact Feedwheel Tensioner*



Strap Range: 3/8 - 3/4"
Strap Gauges: 0.015 - 0.023"
Flat loads
Unlimited take-up



## CP-1410

*Economy Feedwheel Tensioner*



Strap Range: 3/8 - 3/4"
Strap Gauges: 0.018 - 0.023"
Flat loads
Unlimited take-up



## CP-1425

*SD Feedwheel Tensioner*



Strap Range: 3/8 - 3/4"
Strap Gauges: 0.018 - 0.025"
Flat loads
Unlimited take-up



## CP-1450

*HD Feedwheel Tensioner*



Strap Range: 3/4 - 1 1/4"
Strap Gauges: 0.025 - 0.044"
Flat loads
Unlimited take-up



## CP-1500

*Economy Windlass Tensioner*



Strap Range: 3/4 - 1 1/4"
Strap Gauges: 0.023 - 0.031"
Flat loads
Limited take-up



## CP-1525

*Premium Windlass Tensioner*



Strap Range: 3/4 - 1 1/4"
Strap Gauges: 0.028 - 0.044"
Flat loads
Limited take-up



## CP-1550

*Premium Windlass Tensioner with Cutter*



Strap Range: 3/4 - 1 1/4"
Strap Gauges: 0.028 - 0.044"
Flat loads
Limited take-up



## CP-1610

*HD Compact Pusher Tensioner*



Strap Range: 3/8 - 3/4"
Strap Gauges: 0.020 - 0.031"
Round or irregular loads
Unlimited take-up



## CP-1620

*HD Feedwheel Pusher Tensioner*



Strap Range: 5/8 - 1 1/4"
Strap Gauges: 0.023 - 0.044"
Round or irregular loads
Unlimited take-up



## CP-1625

*Light Duty Pusher Tensioner*



Strap Range: 3/8 - 3/4"
Strap Gauges: 0.015 - 0.023"
Round or irregular loads
Limited take-up



## CP-1650

*HD Pusher Rack Tensioner*



Strap Range: 5/8 - 1 1/4"
Strap Gauges: 0.023 - 0.044"
Round or irregular loads
Limited take-up

# STEEL SEALERS & CUTTERS



## CP-1800



*SD Double-Notch Front Action Sealer*

Size Options: 3/8", 1/2", 5/8", 3/4"
Strap Gauges: 0.015 - 0.025"
Use open seals
Double-notch, down cut



## CP-1810

*Economy Front Action Sealer*

Size Options: 1/2", 5/8", 3/4"
Strap Gauges: 0.015 - 0.023"
Use open seals
Double-notch, down cut



## CP-1820



*SD Single-Notch Front Action Sealer*

Size Options: 3/8", 1/2", 5/8", 3/4"
Strap Gauges: 0.015 - 0.025"
Use closed seals
Single-notch, up cut



## CP-1850



*HD Front Action Sealer*

Size Options: 1/2", 5/8", 3/4"
Strap Gauges: 0.023 - 0.031"
Use open seals
Double-notch, down cut



## CP-1870



*HD Double-Notch Side Action Sealer*

Size Options: 3/4"
Strap Gauges: 0.023 - 0.031"
Use open or closed seals
Double-notch, down cut
(24" handles available by request)



## CP-1880



*HD Single-Notch Side Action Sealer*

Size Options: 3/4", 1", 1 1/4"
Strap Gauges: 0.025 - 0.044"
Use closed seals
Single-notch, down cut



## CP-1900



*HD Double-Notch Side Action Sealer*

Size Options: 3/4", 1", 1 1/4"
Strap Gauges: 0.025 - 0.044"
Use HD open or closed seals
Double-notch, up cut



## CP-2000

*HD Sealless Tool*

Size Range: 1/2 - 3/4"	Tensions, seals, & cuts
Strap Gauges: 0.018 - 0.025" HT	



## CP-2010

*SD Sealless Tool*

Size Range: 1/2 - 3/4"	Tensions, seals, & cuts
Strap Gauges: 0.015 - 0.023" RD	



## CP-2400

*Economy Strap Shears*

Strap Range: 3/8 - 3/4"
Strap Gauges: up to 0.028"
Single-hand operated



## CP-2450

*Premium Strap Shears*

Strap Range: 3/8 - 1 1/4"
Strap Gauges: up to 0.031"
Single-hand operated



## CP-2475

*Medium Range Strap Shears*

Strap Range: 3/4 - 1 1/4"
Strap Gauges: up to 0.044"
Two-hand operated



## CP-2500

*HD Strap Shears*

Strap Range: 3/4 - 2"
Strap Gauges: up to 0.050"
Two-hand operated



# POLY & CORD TENSIONERS



**CP-1100**  
*SD Windlass Tensioner*

Polypropylene strapping
Strap Range: 1/2 - 3/4"
Flat loads



**CP-1120**  
*SD Poly Tensioner*

Polyester & Polypropylene strapping
Strap Range: 1/2 - 3/4"
Flat loads



**CP-1150**  
*Premium Windlass Tensioner*

Polyester & Polypropylene strapping
Strap Range: 1/2 - 3/4"
Flat loads



**CP-1160**  
*Premium Windlass Cord Tensioner*

Cord strapping
Strap Range: 1/2 - 3/4"
Use wire buckles
Flat loads



**CP-1175**  
*Premium Windlass Cord Pusher Tensioner*

Cord strapping
Strap Range: 1/2 - 3/4"
Use wire buckles
Round or irregular loads



**CP-1185**  
*Premium Poly Pusher Tensioner*

Polyester & Polypropylene strapping
Strap Range: 1/2 - 3/4"
Use serrated pusher seals
Round or irregular loads



**CP-1188**  
*Economy Large Cord Tensioner*

Cord strapping
Strap Range: 5/8 - 1 1/2"
Use wire buckles
Flat loads



**CP-1190**  
*HD Jumbo Cord Tensioner*

Cord strapping
Strap Range: 5/8 - 1 1/2"
Use wire buckles
Flat loads



**CP-1195**  
*HD Jumbo Poly Tensioner*

Polyester, Polypropylene & Composite strapping
Strap Range: 5/8 - 1 1/2"
Flat loads



**CP-1320**  
*Flat Lacing Rod*

56" overall length
Easy clip technology
Helps feed strap under pallets



**CP-1140**  
*Cord Strap Bar*

Manual pull for Cord strapping
3/4" solid steel round stock
Use wire buckles



**CP-1325**  
*Battery Strapping Tensioner*

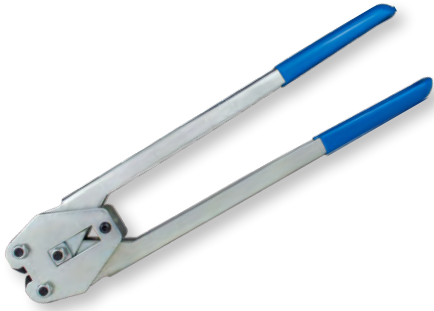
Composite & Woven Cord strapping
Strap Range: 1 - 1 1/2"
Strap Thickness: .033" - .065"



**BATTERY TOOL**

Tension Range: 661 - 1763 lbs
Includes: 1 charger & 1 battery

# POLY SEALERS



**CP-1200**  
*Economy Front Action Sealer*

Polypropylene strapping
Size Options: 1/2", 5/8", 3/4"
Use snap-on open seals



**CP-1225**  
*Premium Front Action Sealer*

Polypropylene strapping
Size Options: 1/2", 5/8", 3/4"
Use snap-on open seals



 **CP-1235**  
*Bidirectional Front Action Sealer*

Polyester strapping
Size Options: 1/2", 5/8", 3/4"
Use serrated seals
17" handles on 1/2" & 5/8" 25" handles on 3/4"



**CP-1245**  
*Symmetrical Sealer*

Polyester strapping
Size Options: 5/8", 3/4"
Use symmetrical seals
Front action, bidirectional
17" handles



 **CP-1250**  
*Unidirectional Premium Front Action Sealer*

Polyester strapping
Size Options: 1/2", 5/8", 3/4"
Use serrated seals
17" handles on 1/2" & 5/8" 25" handles on 3/4"
Blue: long jaw   Orange: short jaw



 **CP-1255**  
*Economy Polyester Sealer*

Polyester strapping
Size Options: 5/8"
Use serrated seals
17" handles



**CP-1275**  
*HD Premium Front Action Micro-Grit Sealer*

Polyester & Polypropylene strapping
Size Options: 1/2", 5/8"
Use micro-grit seals



 **CP-1285**  
*Serrated Pusher Sealer*

Polyester & Polypropylene strapping
Size Options: 1/2", 5/8", 3/4"
Use serrated pusher seals



 **CP-1295**  
*HD Side Action Micro-Grit Sealer*

Polyester strapping
Size Options: 5/8", 3/4"
Use micro-grit seals

## STEEL SEALS

PART #	(INCH)	DESCRIPTION	WEIGHT (LBS)	QTY
CP-S38SO2	3/8"	Snap-on/Open	12.5	2500
CP-S12SO2	1/2"	Snap-on/Open	15	2500
CP-S58SO2	5/8"	Snap-on/Open	17.5	2500
CP-S34SO2	3/4"	Snap-on/Open	20	2500
CP-S34SO3	3/4"	HD Snap-on/Open	26	1000
CP-S114SO3	1 1/4"	HD Snap-on/Open	53	1000

PART #	(INCH)	DESCRIPTION	WEIGHT (LBS)	QTY
CP-S38PO2	3/8"	Push-on/Close	17.5	2500
CP-S12PO2	1/2"	Push-on/Close	20	2500
CP-S58PO2	5/8"	Push-on/Close	25	2500
CP-S34PO2	3/4"	Push-on/Close	35	2500
CP-S34PO3	3/4"	HD Push-on/Close	38	1000
CP-S114PO3	1 1/4"	HD Push-on/Close	71	1000

## POLY SEALS

PART #	(INCH)	DESCRIPTION	WEIGHT (LBS)	QTY
CP-P12SO1	1/2"	Snap-on, Economy	11	1000
CP-P12SO2	1/2"	Snap-on	12	1000
CP-P58SO2	5/8"	Snap-on	15	1000
CP-P34SO2	3/4"	Snap-on	18	1000
CP-P12SS3	1/2"	Snap-on, serrated	13	1000
CP-P58SS3	5/8"	Snap-on, serrated	20	1000
CP-P34SS3	3/4"	Snap-on, serrated	22	1000
CP-P12PO3	1/2"	Push-on, serrated	9	1000

PART #	(INCH)	DESCRIPTION	WEIGHT (LBS)	QTY
CP-P58PO3	5/8"	Push-on, serrated	13	1000
CP-P34PO3	3/4"	Push-on, serrated	15	1000
CP-P12PS3	1/2"	HD Micro-Grit	22	1000
CP-P58PS4	5/8"	HD Micro-Grit	28	1000
CP-P34PS4	3/4"	HD Micro-Grit	31	1000
CP-P58SY4	5/8"	Symmetrical	46	1000
CP-P34SY4	3/4"	Symmetrical	51	1000
CP-P34SY6	3/4"	HD Double Seal Clips	47	500

## BUCKLES

PART #	(INCH)	DESCRIPTION	GAUGE	WEIGHT (LBS)	QTY
CP-P12WB1-GA	1/2"	Galvanized/Clear Wire, Economy	.105"	12	1000
CP-P12WB2-GA	1/2"	Galvanized/Clear Wire	.096"	15	1000
CP-P12WB3-GA	1/2"	HD Galvanized/Clear Wire	.120"	18.9	1000
CP-P58WB3-GA	5/8"	HD Galvanized/Clear Wire	.120"	26	1000
CP-P34WB3-GA	3/4"	HD Galvanized/Clear Wire	.160"	43.5	1000
CP-P100WB3-GA	1"	HD Galvanized/Clear Wire	.197"	41	500
CP-P114WB3-GA	1 1/4"	HD Galvanized/Clear Wire	.276"	55	250
CP-P12PB2	1/2"	Plastic	STD	4.5	1000
CP-P12WB2-PH	1/2"	Phosphate Wire	.108"	11.4	1000
CP-P12WB3-PH	1/2"	HD Phosphate Wire	.118"	26	1000
CP-P58WB3-PH	5/8"	HD Phosphate Wire	.138"	26	1000
CP-P34WB3-PH	3/4"	HD Phosphate Wire	.157"	43.5	1000
CP-P100WB3-PH	1"	HD Phosphate Wire	.197"	55	500
CP-P114WB3-PH	1 1/4"	HD Phosphate Wire	.276"	50	250



S12SO2



P12SO2



S34SO3



P12SS3



S114PO3



P58PS4



P12WB1-GA



P34SY4



P58WB3-GA



P12WB2-PH



P114WB3-GA



P114WB3-PH



P100WB3-GA



P34WB3-PH

# STRAPPING DISPENSERS



## SC-CART16

Premium Strapping Dispenser



Oscillated wound
For Steel or Poly strapping
Strap Width: up to 3/4"
Core ID: 16"
Face Width: 3-6"
10" rubber tires

## CP-3200

Premium Strapping Dispenser with Strap Troller



Oscillated wound
Order for Steel or Poly strapping
Strap Width: up to 1"
Core ID: 16"
Face Width: 3-6"
10" rubber tires (Pneumatic tires available by request)

# CORD DISPENSERS

SPECIFY CORE ID WHEN ORDERING



## CP-3032

Cord Forklift Mount Dispenser



Disk Insert Options for Core ID: 1 1/2", 3", 6", 8"
Disk Size: 18"
Quick load system

## CP-3040 (ribbon)

Cord Strapping Dispenser



Disk Insert Options for Core ID: 1 1/2", 3", 6", 8", 16" (1" available by request)
Disk Size: 25"
10" tires

## CP-3045 (oscillated)

Cord Strapping Dispenser



Disk Insert Options for Core ID: 1 1/2", 3", 6", 8" (1" available by request)
Disk Size: 18"
10" tires

# EDGE PROTECTORS & CUTTER

## EDGE PROTECTORS

PART #	SIZE	FOR	PER CASE	COLOR
CP-5615	1 1/8" x 7/8"	up to 5/8" strap	1000	Black
CP-5620	1 3/4 x 1"	up to 3/4" strap	1000	Black
CP-5620-HD	1 7/8" x 1"	up to 3/4" strap	1000	White
CP-5630	2 1/8 x 1 1/2"	up to 1 1/2" strap	4000	Black
CP-5640	2 1/4 x 1 5/8"	up to 1 1/2" strap	1000	Black
CP-5640-HD	2 1/2 x 1 3/4"	up to 1 1/2" strap	1000	Black
CP-5660	2 1/2 x 2"	up to 1 1/4" strap	1000	White
CP-5670	4" Jumbo	Lashing	88	Orange
CP-5675	4 x 4 x 12"	Lashing	54	Orange
CP-5680-10	8 x 8 x 10" Jumbo	Lashing	50	Orange
CP-5680-24	8 x 8 x 24" Jumbo	Lashing	1	Orange
CP-5680-36	8 x 8 x 36" Jumbo	Lashing	1	Orange
CP-5680-48	8 x 8 x 48" Jumbo	Lashing	1	Orange
CP-5690	8" Tarp Guard	Tarp	100	Orange



CP-5615



CP-5620



CP-5620-HD



CP-5630



CP-5640



CP-5660



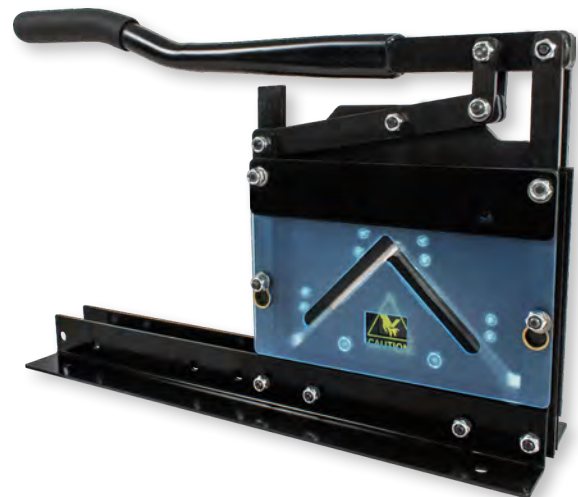
CP-5670



CP-5675



CP-5680



### CP-5825

Corner Board Cutter



Corner Board Range: 2 x 2", 3 x 3", 4 x 4"	Solid steel construction
Thickness Range: 0.120 - 0.225"	Robust steel handle
	Table mountable

# STORAGE SOLUTIONS



**CP-5810**  
*Carton Stand*

Solid steel construction	Anti-slip wire design
Adjustable for different sized boxes	Rubber mounts included (casters sold separately)



**CP-5815**  
*Two Story Carton Stand*

Solid steel construction	Anti-slip wire design
Adjustable for different sized boxes	Rubber mounts included (casters sold separately)



## PACKAGING DISPENSERS

*SPECIFY CORE ID WHEN ORDERING*



**CP-5905**

*Wall Mounted Dispenser with Serrated Blade*

Size Options: 12", 15", 18", 24", 36", 48"	Includes serrated blade
Use with kraft, butcher, and newsprint paper	Quick load system



**CP-5920**

*Industrial Dispenser*

Size Options: 12", 24", 36", 48", 60"	Use paper, film, & foil
Solid steel construction	Table & wall mountable
Industrial model	

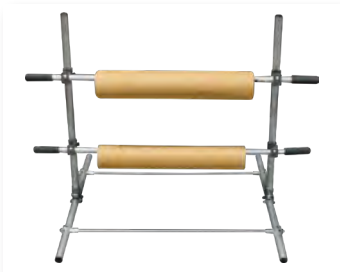


**CP-5945**

*Sheeter Device*

Size Options: 24"	
Use kraft paper, poly sleeves, & stretch film	
Slide cutter	





**CP-5912**

*Economy Paper/Poly Tubing Dispenser Kit*



Length Options: 12", 24", 36", 48", 60", 72"	
Size Options: -S (28" Tall, Table Top Mount) or -L (48" Tall, Floor Mount)	
Additional tiers sold separately (-S = 2 Tiers, -L = 4 Tiers)	Adjustable roll height
Alternate version with casters sold separately	Ships as flat pack



**CP-5960**

*Vertical Paper/Poly Dispenser*



Size Options: 12", 24", 36", 48", 60"	
Solid steel construction	
Casters sold separately	



**CP-5915**

*Paper/Poly Dispenser*



Length Options: 12", 24", 36", 48", 60", 72"	Static roll height
Size Options: 2 Tier or 3 Tiers	Steel construction
Casters sold separately	



**CP-6465**

*Bi-Support Stand with Premium Manual Cutter*



Size Options: 24", 36", 48", 60", 72", 84"	Robust rotary cutter system
Solid steel construction	Locking casters

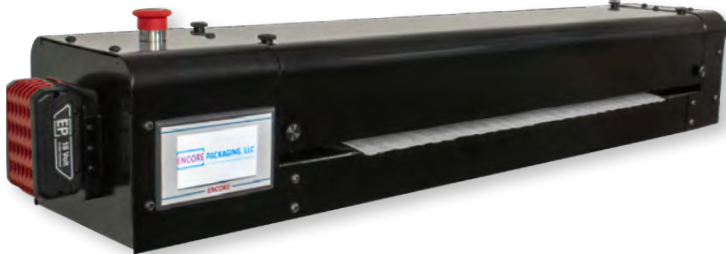


**CP-6460**

*Premium Manual Cutter*



Size Options: 12", 24", 36", 48", 60", 72", 84"	
Robust rotary cutter system	
Table top unit	



**CP-6480**

*Automatic Sheet Cutter*

**BATTERY TOOL**



Size Options: 24", 36", 48", 60"	Use bubble, foam, poly, single-face, & paper
Touch screen operated	Feeds, dispenses, & cuts to length
Battery powered cutter	Includes: 1 charger & 2 batteries
<i>(Plug in version option available, please inquire within)</i>	

# MATERIAL DISPENSERS



## CP-6000S

Wall Mount Unit - Single Arm



Size Options: 12", 24", 36"	Weight Capacity: ~50 lbs
Solid steel tubing	Includes mounting kit



## CP-6000D

Wall Mount Unit - Double Arm



Size Options: 12", 24", 36"	Weight Capacity (per arm): ~50 lbs
Solid steel tubing	Includes mounting kit
Arm sizes are mixable by request	



## CP-6050S

Wall Mount Unit - Single Arm with Slide Cutter



Size Options: 12", 24", 36"	Weight Capacity: ~50 lbs
Slide cutter	Includes mounting kit



## CP-6050D

Wall Mount Unit - Double Arm with Slide Cutter



Size Options: 12", 24", 36"	Weight Capacity (per arm): ~50 lbs
Slide cutter	Includes mounting kit
Arm sizes are mixable by request	



## CP-6220S

Floor Unit - Single Arm



Size Options: 12", 24", 36"	Weight Capacity: ~90 lbs
Brake system	Tear tag
Height adjustable (telescoping)	Locking casters



## CP-6220D

Floor Unit - Double Arm



Size Options: 12", 24", 36"	Weight Capacity (per arm): ~65 lbs
Brake system	Tear tag
Height adjustable (telescoping)	Locking casters
(Arm sizes are mixable)	



**CP-6250S**

*Floor Unit - Single Arm with Slide Cutter*



Size Options: 12", 24", 36"	Weight Capacity: ~90lbs
Slide cutter & brake system	Locking casters
Height adjustable (telescoping)	



**CP-6250D**

*Floor Unit - Double Arm with Slide Cutter*



Size Options: 12", 24", 36"	Weight Capacity (per arm): ~65 lbs
Slide cutter & brake system	Locking casters
Height adjustable (telescoping)	Arm sizes are mixable by request



**CP-6300**

*Economy Floor Unit*



Size Options: 24", 48", 60", 72"	Weight Capacity: ~130 lbs
Slide cutter & wire brake	Use bubble, foam, poly sheets & shrink wrap
Locking casters	Gravity feed unit



**CP-6420**

*Floor Unit - Single Arm*



Size Options: 36", 48", 60", 72"	Weight Capacity: ~120 lbs
Tear tag	Locking casters
Single arm brake system (Arm stabilizer come standard for all sizes)	



**CP-6450**

*Floor Unit*



Size Options: 36", 48", 60", 72"	Weight Capacity: ~120 lbs
Slide cutter	Locking casters
Single arm brake system (Arm stabilizer come standard for all sizes)	



**CP-6455**

*Bi-Support Roll Stand*



Size Options: 24", 36", 48", 60", 72", 84", 96"	Weight Capacity: ~150 lbs
Height adjustable	Use bubble, foam, & poly
(Additional roll mounts sold separately)	Locking casters

# POLY TUBING & BAG DISPENSERS



## CP-720

*Poly Tubing Dispenser*

Size Options: 6", 12", 24", 36"

Classic, simple design

Use poly tubing rolls



## CP-730

*HD Table-Top Poly Tubing Dispenser*

Size Options: 6", 12", 24", 36", 48", 60", 72", 84", 96"

Classic design

Use poly tubing rolls



## CP-725

*Poly Tubing Dispenser with Slide Cutter*

Size Options: 6", 12", 24", 36"  
(Larger sizes available by request)

Classic design

Use poly tubing rolls



## CP-742

*Economy Poly Bag/Tubing Stand*

Size Options: 36" or 48"

Solid steel construction

Easy loading system

Floor & bench mountable

Casters available separately



## CP-745

*Poly Tubing, Kraft Paper, & Stretch Film Dispenser*

Size Options: 12-18", 18-28", 24-36", 36-48", 48-60", 60-72", 72-84"

Core ID: 3" (Other sizes available by request)

Height adjustable (telescoping)

HD steel frame

Use kraft, foil, & poly

Table mountable

Casters available separately



# STRETCH FILM DISPENSERS



**CP-760**  
*Hand Film Dispenser*

Film Roll Range: 3 - 5"
Core ID Options: 2" or 3"
Economic hand dispenser
Ergonomic pistol handle



**CP-760-1 S/L**  
*Hand Film Dispenser - Short/Long*

Film Roll Options: 3" (short) or 5" (long)
Core ID: 1 1/2"
Tension adjustable
Ergonomic pistol handle



**CP-769**  
*Kraft Paper Table Top Attachment*

Size Options: 18", 24", or 36" (Larger sizes available by request)
Table mountable
Robust steel design
Can use anything on a roll



**CP-770**  
*U-Hook Stretch Film Holder*

3 super-strength magnets
Solid steel construction
Attachable to any metal surface



**CP-780**  
*Hand Inserts*

Core ID: 3"
Built-in brake
Comfort grip
Ears feature for roll stability



**CP-785**  
*Core for Coreless Film*

Core ID Options: 2" or 3"
Size Options: 13", 15", 18", 20"
Solid steel construction



**CP-786**  
*Core for Coreless Film with Handles*

Core ID Options: 2" or 3"
Size Options: 13", 15", 18", 20"
Solid steel construction
Ergonomic handles



**CP-787**  
*Core for Coreless Film with Dispenser*

Core ID Options: 2" or 3"
Size Options: 13", 15", 18", 20"
Solid steel construction
Base stabilizer



**CP-800**  
*Pistol Grip*

Core ID: 2 - 3"
Film Roll Range: 12 - 20"
Roller bearing design for tension control
Base stabilizer



**CP-810**  
*Pistol Grip with T-Handle*

Core ID: 2 - 3"
Film Roll Range: 12 - 20"
Roller bearing design for tension control
Base stabilizer



**CP-820**  
*Ball Grip*

Core ID: 2 - 3"
Film Roll Range: 12 - 20"
Roller bearing design for tension control
Base stabilizer



**CP-830**  
*Lightweight Dispenser for Pre-Stretch*

Core ID Options: 1 1/2", 2 or 3"
Film Roll Range: 15 - 20"
Use pre-stretch film
Includes magnet attachment



Quality • Consistency • Dependability



**Challenger-Pkg.com**